

EXPLORE

NEW ZEALAND OIL & GAS • SOUTHERN COMMUNITY PANEL PANUI 01

New Zealand Oil & Gas in the Southern region

Clipper – Canterbury Basin

New Zealand Oil & Gas 50% [Operator]

Beach Energy 50%

You might have read about our growing interest in the Barque prospect in our Clipper permit.

It's a 150-square kilometre structure located off the North Otago coast, about 60 kilometres east of Oamaru and 3000 metres below the seabed. We acquired acoustic survey data over it at the end of December 2013 - that's when a survey vessel tows streamers that carry hydrophones listening to sound waves bounced back from underground. The data collected helps geoscientists to understand the subsurface. This work has helped to identify potential hydrocarbon deposits. In our latest quarterly report to the stock market we announced the potential size of the target and 10-20 per cent chances of successfully discovering and developing the Barque prospect. At the moment New Zealand Oil & Gas is talking to potential partners about joining the joint venture, with an aim of drilling it in 2017.

Toroa Permit - Great South Basin

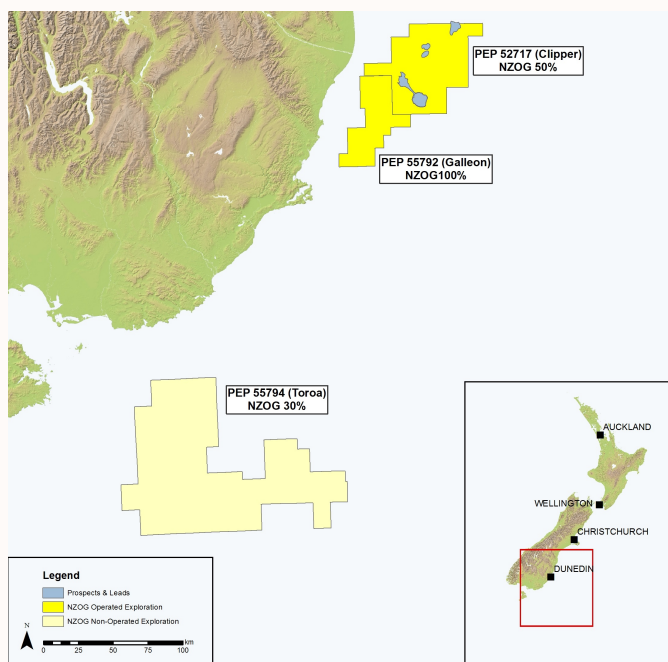
New Zealand Oil & Gas 30%,

Woodside Energy [New Zealand 55794] 70% [Operator]

New Zealand Oil & Gas is a joint venture partner with Woodside for the Toroa permit southeast of Bluff.

Seismic acoustic survey of the Toroa permit was completed in March and Woodside [as permit Operator] will now lead the analysis of that data. Analysis will continue over the next 1-2 years, at which point a decision would be made to either commit to further investigation or surrender the permit.

If the analysis is promising and the joint venture decided to seek approval for drilling, there would be an application to the Environmental Protection Agency. Please note time frames can change.



Galleon – Canterbury Basin

New Zealand Oil & Gas 100% [Operator]

Seismic data acquired in December 2013 has highlighted several features of interest in the vicinity of a sub-commercial discovery in Galleon-1 in the 1980s. As a result New Zealand Oil & Gas has asked the regulator for more time to analyse prospectivity in this permit.

There is growing activity in the Great Southern and Canterbury Basins

Anadarko drilled Caravel-1 east of Clipper in early 2014, with another well scheduled to be drilled mid-2017. Shell also has permits along this coast that could be drilled in 2016/17. Activity located in the Exclusive Economic Zone is regulated by the newly-established Environmental Protection Agency. An oil and gas exploration application outside already-producing fields would be the first of its kind to be considered by the EPA.

More information is available on our website, at nzog.com or by contacting Anna: anna.ririnui@nzog.com

Southern Community Panel

New Zealand Oil & Gas has established Community Panels in regions where the company is most active.

The Southern Community Panel draws together perspectives from across the community including environmental, business, social services, iwi and youth.

The purpose of the panel is to assist the Southern community to understand New Zealand Oil & Gas activities including any potential opportunities and risks, and to assist New Zealand Oil & Gas to understand community views.

The panel also guides New Zealand Oil & Gas about their expectations of a New Zealand oil and gas exploration company.

The intention is that for this forum to be effective all perspectives must be represented – the panel is not to be an advocate for New Zealand Oil & Gas, but a conduit for information and dialogue or a community hub. It is therefore important that it operates transparently and with integrity.

More information is available on nzog.com or by contacting Anna.

Our Values

New Zealand Oil & Gas is a values-based business established in 1981. With around 14,000 shareholders on both the NZX and ASX, and a market capitalisation of around \$200 million, we are New Zealand's largest listed explorer. Our people live here because of a commitment to our country's way of life. We bring our New Zealand values to all that we do and want to be held to account if we are not seen to be upholding this.

Our Values

Pono me te Tika | Integrity and Trust

Te Reo Whakawhitiwhiti | Communication

Tangata Auaha | People and Passion

Arumoni Hangai | Commercial Focus

More info and useful sites

Seismic acoustic surveys

PEPANZ (Petroleum Exploration and Production Association of NZ) – Industry body www.pepanz.com – very useful explanation of seismic surveys

NZ Petroleum and Minerals – another good one for information on seismic surveying.

<http://www.nzpam.govt.nz/cms/iwi-communities/government-role/offshore-seismic-surveying>

Regulation of the process

Maritime NZ – helpful description of who does what in NZ's offshore waters from a regulatory perspective. Includes information on oil spill response plan.

<http://www.maritimenz.govt.nz/Environmental/Exploration/default.asp>

Environmental Protection Authority (EPA) www.epa.govt.nz – The EPA regulates NZ's offshore waters (ie where our permits lie in the Southern region). This site includes info on what the regulatory process is to get environmental approvals etc for the EEZ.



Ngā mihi nui - Anna Ririnui

Anna joined the NZOG team in March as Community Engagement Manager. Anna grew up in Invercargill and is a graduate of Otago University's Master of Regional Resource Planning programme. She has worked in environmental management, corporate sustainability and community relations roles in the energy sector.